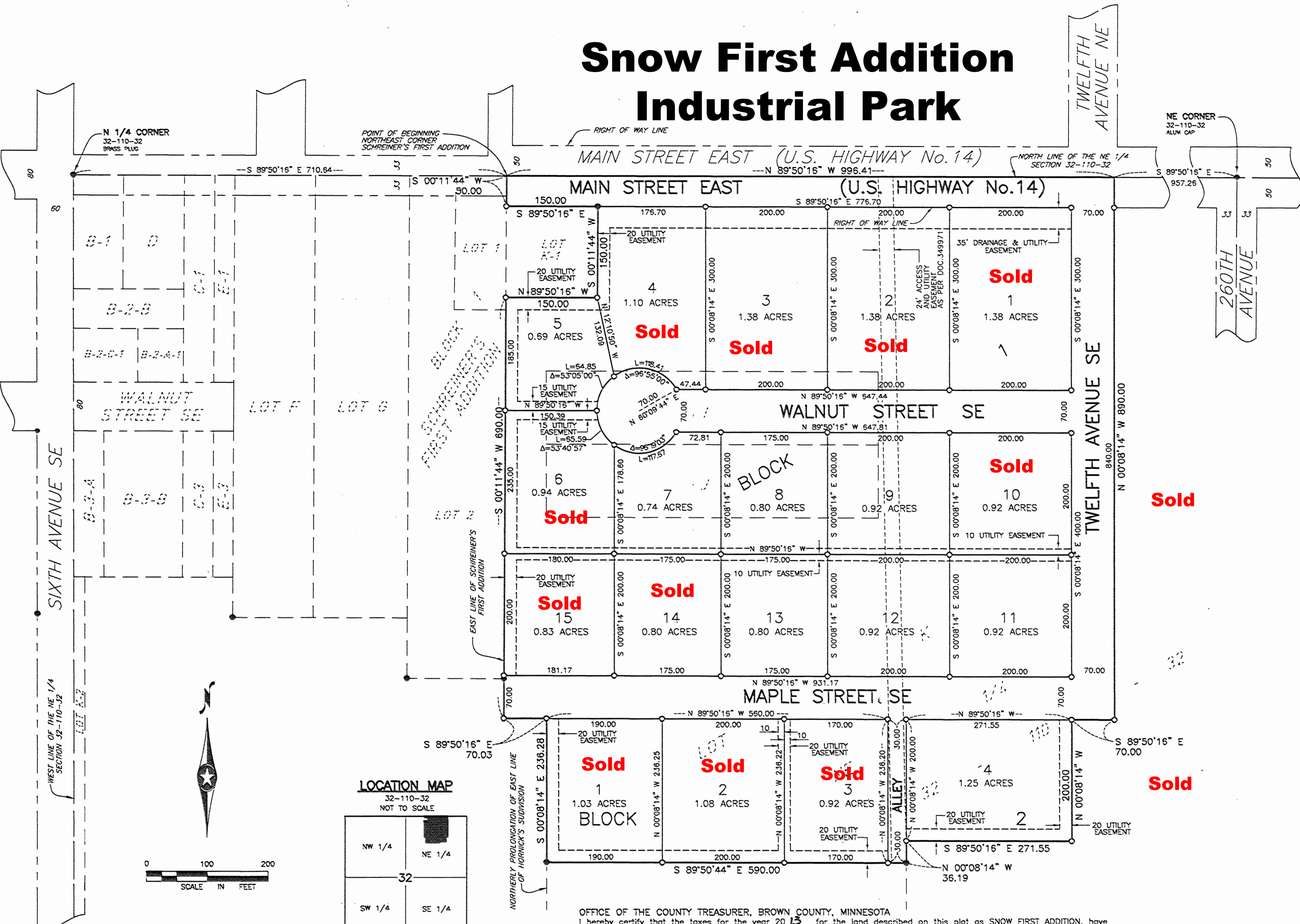
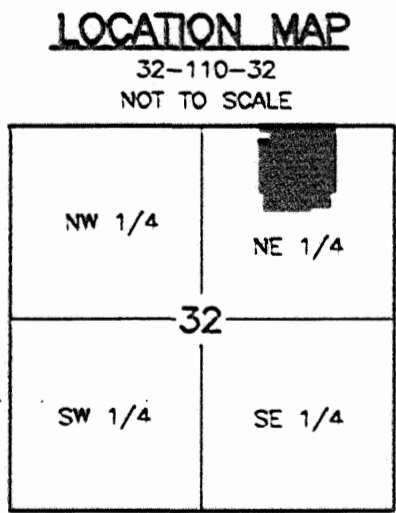


Snow First Addition Industrial Park



- 1/2" IRON PIPE MONUMENT SET MARKED BY REG. NO. 44996
- MONUMENT FOUND



BEARING BASIS
BEARINGS ARE BASED ON THE BROWN COUNTY COORDINATE SYSTEM, NAD 83, (1996 ADJUSTMENT)

AREAS
ROADS & ALLEY = 5.54 ACRES
ALL PLATTED LOTS = 18.80
TOTAL PLATTED AREA = 24.34 ACRES

OFFICE OF THE COUNTY TREASURER, BROWN COUNTY, MINNESOTA
I hereby certify that the taxes for the year 2013 for the land described on this plat as SNOW FIRST ADDITION, have been paid this 26th day of March, 2013.

Martin C. Helges
Brown County Treasurer

OFFICE OF THE COUNTY AUDITOR, BROWN COUNTY, MINNESOTA
I hereby certify that the taxes are paid for all years prior to 2013 on the lands described in the instrument of dedication on this surveyor's plat.

Martin C. Helges
Brown County Auditor

OFFICE OF THE COUNTY RECORDER, BROWN COUNTY, MINNESOTA
DOCUMENT NUMBER 392307

I hereby certify that this instrument was filed in the office of the County Recorder for record on this 26th day of March, 2013, at 2:00 o'clock A.M.

Beth Kamaly
Brown County Recorder